

# Annual Report

2022 - 2023



# Kyeema Foundation



## Incorporation

Kyeema Foundation (ABN 84 107 210 015) is a public company limited by guarantee, incorporated under the Corporations Act. Its registered office is located at Level 7, 307 Queen Street, Brisbane, Queensland, Australia.

## Charitable status and tax concessions

Kyeema Foundation is endorsed by the Australian Taxation Office as a Charitable Institution with deductible gift recipient (DGR) status and receives certain tax concessions and exemptions consistent with its status, which relate to income, goods and services and fringe benefits tax. Donations given by any Australian taxpayer to the Kyeema 'Developing Country Relief Fund' can be claimed as a tax deduction.

Kyeema Foundation is also registered as a charity under the Queensland Collections Act (1966).

## Accreditations

Kyeema Foundation is an Australian Charities and Not-for-Profits Commission (ACNC) registered charity and an active member of the Australian Council for International Development (ACFID). We are a committed signatory to the ACFID Code of Conduct, which is a voluntary, self-regulatory sector code of good practice.

The Code requires members to meet high standards of corporate governance, public accountability, financial management, and management and accountability for non-government organisations (NGOs).

Kyeema Foundation is accredited by the Australian Government Department of Foreign Affairs and Trade, responsible for managing the Australian Government's aid program. Kyeema acknowledges the support of the Australian Government Department of Foreign Affairs and Trade through the Australian NGO Cooperation Program (ANCP).

## Feedback and complaints

We welcome feedback on this report and on our operations and conduct, more generally. Please send any feedback or complaints to [kyeema@kyeemafoundation.org](mailto:kyeema@kyeemafoundation.org) or write to: Chief Executive Officer, GPO Box 3023, Brisbane Qld 4001. Acknowledgement and response to the feedback will be given. Complaints relating to a breach of the ACFID Code of Conduct can be made directly to the ACFID Code of Conduct Committee by email [complaints@acfid.asn.au](mailto:complaints@acfid.asn.au) or website address: [www.acfid.asn.au/code-of-conduct/complaints](http://www.acfid.asn.au/code-of-conduct/complaints).

## Front cover photo

Participants from Pacific Islands undertaking thermo-tolerant coral gardening training in Fiji.

## Minimising our environmental footprint

Kyeema actively works to reduce our impact on the environment with a focus on emissions reduction. We hold virtual meetings with our teams based in diverse geographies and limit hard copies of publications. We also participate in a carbon offset scheme.



# CONTENTS

4	Executive Chair Message
5	CEO address
6	Kyeema's Strategic Approach
8	Our impact by numbers
12	Nutrition, health and livelihoods
16	Resilient communities
20	Innovation
	Our commitment to sustainable and equitable development
24	<ul style="list-style-type: none"><li>• Equity, diversity, inclusion &amp; safeguarding</li></ul>
26	<ul style="list-style-type: none"><li>• Environmental sustainability</li></ul>
28	<ul style="list-style-type: none"><li>• Global goals</li></ul>
30	Financial Statements
39	Acknowledgements
40	Partners and Sponsors
42	Governance

# Executive Message

## Sinead Magill, Kyeema Foundation Chair



As Chair of Kyeema, I'm proud of the amazing work of our team. I took on the Chair at a time of change for Kyeema as we finalised and then implemented our new strategic plan. I am pleased to see the plan bearing fruit, enabling us to enhance the impact we deliver worldwide.

In the past year Kyeema has continued the work for which it was incepted 20 years ago: improving the nutrition and livelihoods of marginalised communities by delivering safe and potent thermotolerant livestock vaccines and giving communities the skills to deliver the vaccine themselves. This remains effective in protecting their livestock as a source of protein and alternative income. But importantly Kyeema has also grown in scope and reach to encompass a much greater range of partnerships and services to communities. Kyeema's approach to One Health and One Welfare has seen involvement in activities as far ranging as standalone incubators being placed into

war-torn Ukraine to the empowerment of female entrepreneurs in Bangladesh.

We have reopened the Membership of the organisation and welcome our new Members (listed below). We are renewing our Directorships and building on the Kyeema approach of using years of intelligent development experience to find and grow partners that work directly on community issues and provide significant economic benefits for small-scale producers. I want to add my thanks to donors and partners as well as my fellow Directors, Members, and the Kyeema team. I also want to take the opportunity to thank departing Director Chris Lee for his strategic insight and contributions to the Board. Chris is replaced on the Board by former CEO and active volunteer Celia Grenning and we welcome Celia's passion and experience to the Board table.

Of course the changes in Kyeema this past year provide us the opportunity at this point to honour the exceptional career and contribution of Dr. Robyn Alders, AO. Robyn's tireless dedication to Kyeema and her work in One Health has had a profound impact on global health, agriculture, and community development.

Robyn has been an integral part of the Kyeema Foundation's journey from inception in 2003 and she still provides technical consulting services through her work in Burkina Faso as well as being a trusted guru for the whole technical team. Robyn's vision and unwavering commitment to improving the lives of vulnerable communities, particularly through sustainable poultry production, have been at the heart of Kyeema's mission. Her ability to bridge the gap between scientific expertise and practical, community-driven solutions has empowered countless individuals to take control of their poultry resources, improve food security, and attain economic self-sufficiency. Dr. Alders has not only been an advocate for smallholder poultry production but also an ardent supporter of biosecurity, One Health, and preparedness and response. Her expertise in this field has helped protect both human and animal populations from potential pandemics, underscoring the critical link between animal and human health. In this report, we celebrate Dr. Alders not only for her personal achievements but also for the transformative role she has played within the Kyeema Foundation. Her legacy will continue to shape the future of community-based poultry programs, sustainable agriculture, and global health for years to come.

# CEO Address

## Anthony Carrigan, Kyeema Foundation CEO



Our Annual Report 22/23 marks some very significant changes for Kyeema. We have farewelled respected Board Members, welcomed back experienced resources as well as new organisational members and teammates, and taken the organisation into new partnerships and exciting new areas of operation. My first full year as CEO has been challenging and rewarding in equal measures. I am constantly grateful to have a dedicated team of highly qualified and motivated team members and partners with me to deliver our work.

I am also now much more in tune with the hurdles of seeking and managing work in the not-for-profit sector. We are truly appreciative of our donor partners and have worked hard to create innovative and effective program designs that have to be that much more cost-effective as we seek to raise the required co-contributions for our grant activities. We are working constantly to deliver the greatest amount

of any funding through to the projects on the ground and without the absolutely pivotal support of our donor community we would not be able to deliver the work that is described in the following pages.

I particularly want to highlight our work in an increasingly troubled Ethiopia. The Kyeema team and activities are quietly addressing issues that go to the heart of sustainable development and resilience in Ethiopia. We are continuing our work in small-holder livestock vaccination but with a view to the future have coupled that with support for female veterinary graduates to be able to establish their own practices and service otherwise vulnerable communities.

This similar pragmatic approach to long-term growth and resilience is also reflected in our Mozambique program where the now legendary Dr Rosa Costa leads a team that in the last year is helping women, including women with disabilities sustainably increase their income or establish new commercial operations. This may sound like a relatively small number in comparison to some gaudy institutional strengthening activities but in an area marred by internal conflict and with genuine poverty and malnutrition concerns this program plays a vital role in helping marginalised communities make a step forward.

I am equally as proud of the work we are doing in my own backyard here in the Pacific. Our PNG program continues to strengthen as our reputation as an honest, practical, and listening partner of choice for communities grows. Demand for the activities and training Kyeema is providing is almost outstripping our ability to supply at the moment but we are confident that as our team grows and partnerships deepen we will reach more communities with this important work.

One new aspect of work straddling both Africa and the Pacific has been developed with our own Dr Eliza Smith working with the Food and Agriculture Organization to train veterinary paraprofessionals to deliver programs in communities for improved farm biosecurity and One Health services. It is also supporting better communication between human, animal and environmental health professionals in underserved rural communities.

Finally I want to provide specific mention to our corporate partners. In particular the programs that we are delivering through our partnership with Palladium are examples of the value of very well curated procurement to find quality development activities. We hope that the Palladium staff interacting with Kyeema are finding the experience rewarding and I want to commend the team there for continuing to seek out and support sophisticated and impactful projects.

Thank you all for your dedication and support – we look forward to many great new dawns!



# Kyeema's Strategic Approach

## Our Vision and Mission

**Our vision** for a world where partnerships catalyse innovation and enrich lives.

**Our mission** is working together to improve the health and prosperity of marginalised communities and their environments.

Our programs support marginalised families, specifically women and children, to improve their food, nutrition, health, and economic security.

By marginalised, we mean any under-served community, anywhere in the world, that is at higher risk of detrimental impacts of economic, socio-political or environmental instability.

Now more than ever, marginalised communities and our environment need support.

That's why we are promoting and scaling opportunities for improved health and prosperity in three key focus areas:

1. Nutrition, Health and Livelihoods;
2. Resilient Communities; and
3. Innovation.

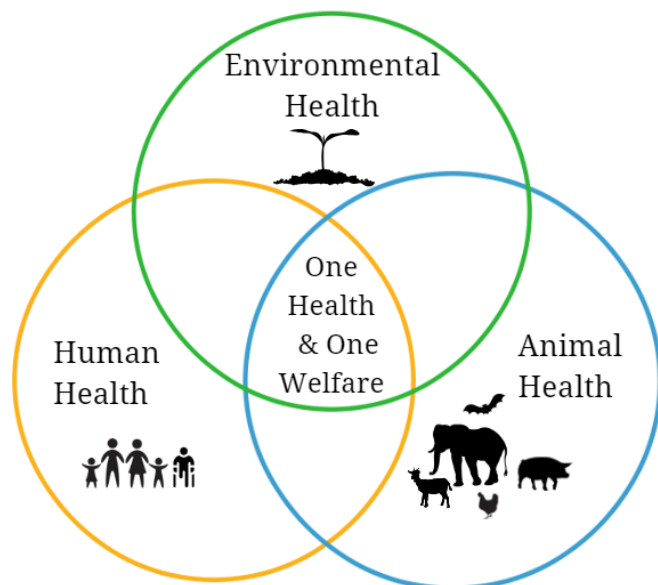
## One Health and Welfare

Our work is informed by a 'One Health and One Welfare' approach: a collaborative framework that recognises the interdependence of humans, animals, and the natural environments in which they live.

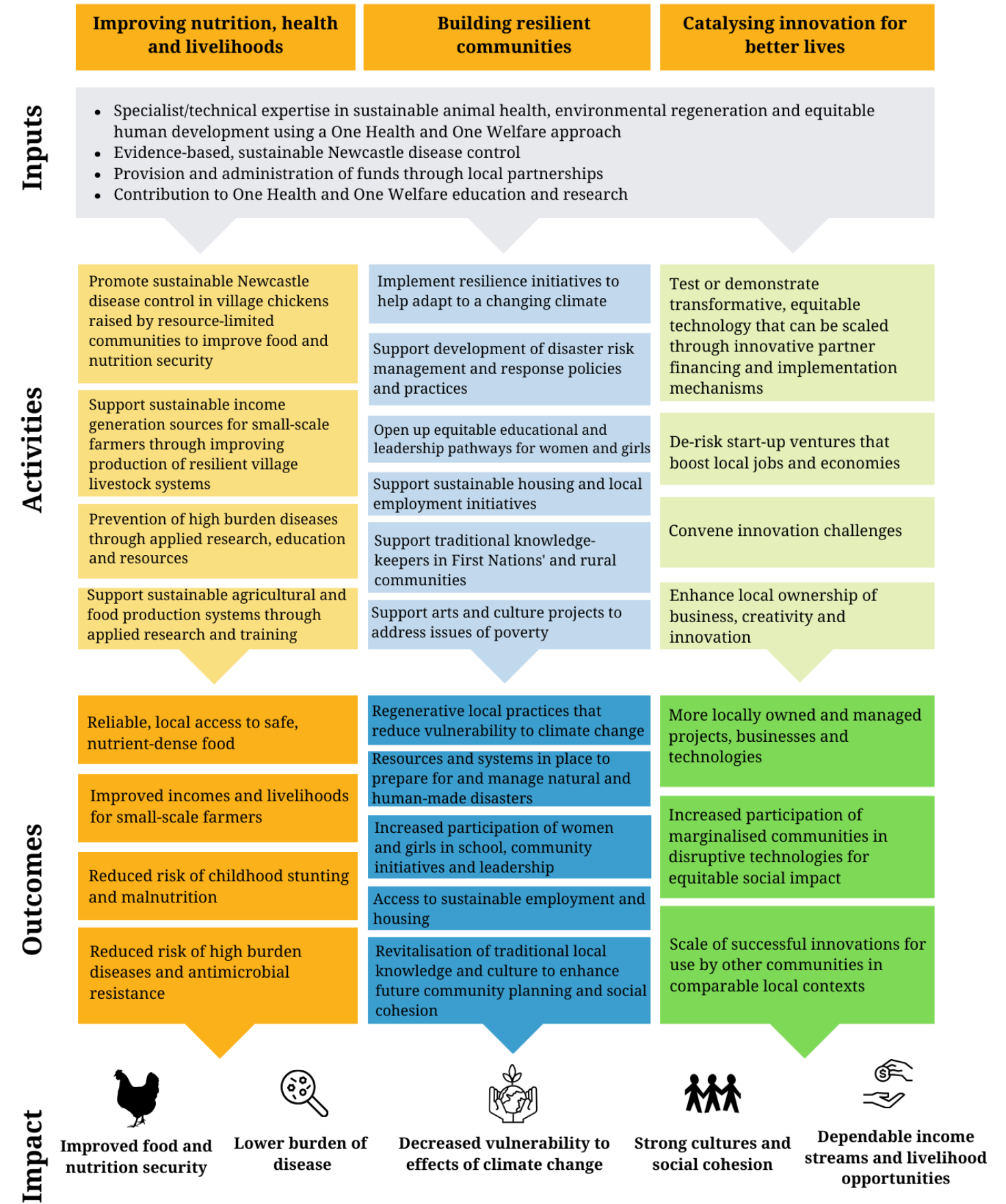
Any project we design, or support, must be mutually sustainable for both humans and their natural ecosystems.

In the 2022-23 year we have grown our portfolio and technical expertise in nature-based solutions for climate change with a focus on community-led coral reef, and associated coastal habitat restoration. We continue as a learning organisation taking on new ways to best build capacity and foster resilience in local communities, whilst encouraging local ownership of solutions using shared systems and resources.

Motivated by some great projects supported in the 2022-23 year, we continue to look for new partners to grow our network.



## Kyeema's Organisational Theory of Change





# Our Impact By Numbers



**12,028**

People directly engaged

**19**

Countries



**27**

Projects



Total population reached

**93,556**



**52,728**

people supported to improve their **nutrition, health and livelihoods**



**602**

population with reduced risk of high burden disease & antimicrobial resistance (AMR)



**2,191**

people with increased participation in **technologies for equitable social impact**



**2,059**

people with increased access to **information and communications technology**



**210**

people directly engaged to reduce risk of **childhood stunting/malnutrition**



**50,614**

small-scale farmers with improved **incomes & livelihoods**



**52,067**

people with improved local access to **nutrient-dense food**



**257**

**locally owned & managed** projects, businesses, & technologies supported



**214**

**businesses** supported to grow



**11**

initiatives scaled off successful innovations for use by other **communities in comparable local contexts**



**45,831**

people supported to **build community resilience**



**326**



people who participated in the development, adoption and/or implementation of **local disaster risk reduction strategies or climate change plans**

**300**

people engaged in regenerative local practices that **reduce vulnerability to climate change**



**8,332**

**women and girls directly supported** through our programs



**280**

women supported to assume **leadership roles**



**1,556**

people trained in **disability awareness and inclusion**



**756**

people supported to have sustainable housing and local employment



**562**

people reached with livelihoods support interventions



**3,487**

people who received assistance due to a **climate-related or human-related disaster**



**40,035**

people who participated in sessions on **prevention, reduction and response to violence, abuse and exploitation of children**



**116**

people who received **disability support services** specific to their needs

**732**

girls are supported to **attend school and get an education**





# Health, Nutrition and Livelihoods

Championing small-scale farmers





# Nutrition, Health and Livelihoods

**52,728** people supported to improve their nutrition, health and livelihoods

Our programmatic focus centres on championing the nutrition, health, and livelihoods of small-scale farmers, with a special emphasis on marginalized groups. Over the course of this year, we have been able to extend our support to 52,728 individuals worldwide, resulting in significant improvements in their nutrition, health, and livelihoods.

For 52,067 people, access to nutrient-dense food has become more reliable, ensuring healthier diets. Additionally, we've enabled better incomes and livelihoods for 50,614 small-scale farmers, positively impacting their financial well-being. We've directly reduced the risk of childhood stunting and malnutrition for 210 individuals, particularly children. In addition 602 people have directly experienced a decreased risk of high-burden diseases and antimicrobial resistance (AMR), contributing to their overall health and well-being.

## Mozambique

Building upon the successes of our pilot project 'Semi-intensive rural poultry production model,' we proudly introduce our expanded ANCP-funded project in Mozambique: 'Female-led Village Chicken Value Chain Development.' The project's core objective is clear: to empower marginalized women in the Marracuene district of Mozambique by enhancing their poultry production capabilities and fostering increased sales and consumption of village chicken meat and eggs.

In this year alone, 42 women have embraced enhanced agricultural and fisheries practices, resulting in a noteworthy uptick in their household incomes, primarily through the sale of chickens and eggs. Furthermore, an impressive 210 individuals now enjoy improved access to an ample supply of nourishing food.

Ana Massico is one of the breeders supported under the 'Female-led Village Chicken Value Chain Development' project in Marracuene, Mozambique. Photo credit: Ana Zandamela.



## Papua New Guinea

Our project, 'Food Security and Income for Villages through Village Chicken Rearing and Reef Restoration,' has successfully trained 43 individuals across 3 communities throughout Central Province in village chicken rearing to improve household nutrition, health and livelihoods. Simultaneously, we have sustained our commitment to coral restoration activities at Tubusereia sites, aiding an additional 3 communities establishing coral nurseries. We have also provided all active communities with comprehensive training in coral monitoring and maintenance techniques.



## Malawi

Under the 'Village Poultry for Better Livelihoods' project, our core country partner, Rural Poultry Centre (RPC), has successfully trained and equipped 165 community-based poultry workers to deliver vaccination campaigns that have reached 9,600 households within Dowa East and Mchinji.



## Colombia

The "Agro-ecological Solidarity Supply Chains Project," led by Proyectar Sin Fronteras (PSF), with support from the Kyeema Foundation and Palladium, aims to strengthen agroecology in rural and urban communities. This activity aids 25 agricultural producers in transitioning to agroecological practices, utilizing a Participatory Labelling System (SPG) to enhance resilience. Through activities like working closely with production units, fostering community-based gardens, and distributing solidarity baskets to marginalized communities, the project has significantly improved food accessibility for 1,102 individuals. It has also helped 106 individuals adopt better agricultural practices and engaged 75 households in nutrition-sensitive programs. These efforts promote healthier, sustainable agriculture and dietary habits in communities.



## Ghana

Funded by the Palladium Our Communities Fund, the Action Through Enterprises (ATE) project in Lawra, Ghana, is making substantial strides in improving the health, nutrition, and livelihoods of its residents. This year, ATE's impact is evident through its school feeding program, benefiting 52 children at Bagri Junction Junior High School, ensuring they receive nutritious meals. Additionally, 14 individuals have adopted improved agricultural and fisheries practices through ATE's support for dry-season farmers. Overall, the project has increased access to sufficient food for 112 people in Lawra.





# Resilient Communities

Supporting local partners to address locally identified challenges





# Resilient Communities

**45,831** people supported to build community resilience

In FY22/23 we made a substantial impact, providing support to 45,831 individuals in their journey towards building resilience within their communities. We extended assistance to 3,470 people affected by both climate-related and human-made disasters. Access to locally improved sustainable energy infrastructure has been granted to 200 individuals, contributing to the sustainable development of communities. Notably, predominantly through our work in the Pacific region, we've engaged 326 people in the development, adoption, and implementation of local disaster risk reduction strategies and climate change plans. Additionally, as part of these efforts, we've reported the active involvement of 340 individuals in initiatives related to 'life underwater.'

Our contributions extend further, as we've supported 40,000 individuals through the Humanitarian Relief Fund. This support has included access to mental health and psychosocial assistance, as well as facilitating entry into livelihood interventions and income-generating initiatives for those affected by conflict.

## Pacific NBS project - focus on coral nurseries Fiji/PNG

Within the DFAT/WWF Australia Climate Resilient by Nature program, we've conducted two workshops this year, organized into two distinct streams. The first stream involved a two-week training session in Fiji, where 19 Marine Science graduates from Fiji, Samoa, and PNG received comprehensive instruction in the practical and theoretical aspects of establishing thermotolerant coral nurseries. Participants worked in country groups to plan test sites in their home countries, with seed funding provided for thermotolerant coral nursery construction and monitoring. Each group will collect data and report results, aimed at evaluating the effectiveness of the thermotolerant coral gardening approach for community reef restoration.

An additional training session was held in Fiji for selected community members from Moturiki, focused on providing training in community-led coral gardening and village chicken rearing, as an alternative source of both protein and income. This approach seeks to support the reduction of overfishing in local reefs undergoing restoration. These workshops, therefore, address both environmental conservation and socio-economic aspects, fostering a holistic approach to community resilience.

Wilson Hazleman placing an A-Frame during the Marine Science Training Workshop for CRxN project in Fiji, August 2022. Photo credit: Mike Worsman, Give Media



## Ethiopia disability project

Help for Persons with Disabilities Organization (HPDO) in Ethiopia, supported by Humanitarian Relief funding, empowered 25 women affiliated with the Association of Women with Disabilities in Debrebirhan. Their mission was to establish a soap production social enterprise, providing income opportunities for women affected by the Ethiopian civil conflict and COVID-19. This initiative not only uplifts these women economically but also addresses the local demand for soap, which has surged due to COVID-19, while local supply falls short. It's a step towards improved hygiene and economic resilience.



## Mongolia education project

Development Interlink NGO, funded through the Our Communities Fund, is implementing the 'mini solutions' program in three rural Mongolian schools. This initiative has provided improved access to educational information and communication technology to 1,443 individuals, primarily focusing on enhancing educational and creative literacy among students. The program also involves capacity development for 3 teachers across the three schools, to adopt leadership positions in program implementation and student progress monitoring.



## Ukraine activities - child health and protection focus within disaster assistance.

Amid the conflict in Ukraine, the Humanitarian Relief Fund has funded numerous activities aimed at assisting those affected by the war, particularly focusing on child health and protection in disaster situations. Thanks to this support, the Ministry of Health in Kyiv received two mOm portable battery-operated incubators, which have estimated to save the lives of 64 babies during the reporting period.

Partnerships for Every Child extended help to 97 families, comprising 190 children who had sought refuge in Moldova and were being integrated into Moldovan communities. These families were provided with improved access to essential food and hygiene products.

The Centre for Prevention of Child Abuse provided psychosocial support to Ukrainian refugees, benefiting children and families from Ukraine living in refugee centers and host families throughout the country through their mobile units' teams. The funds contributed to the delivery of mental health and psychosocial support to refugee children and caregivers. Additionally, over 40,000 documents were distributed to Ukrainian children, enhancing their access to psychosocial services and support during the conflict.





# Innovation

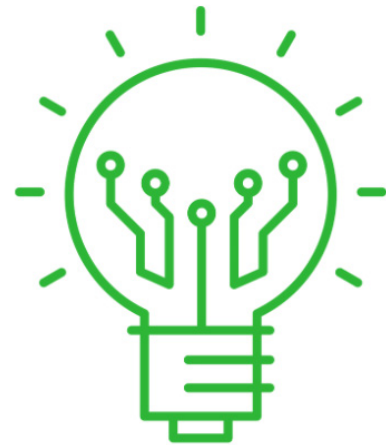
A satellite is shown in orbit above the Earth. The satellite has several long, dark solar panels extending from its central body. The Earth's surface is visible, showing continents and oceans. The background is a starry space with a faint galaxy visible.

Catalysing innovative and  
inclusive solutions



# Partnerships for Innovation

**2,191** people with increased participation in technologies for equitable social impact



At the heart of our vision lies the commitment to drive groundbreaking and inclusive advancements in technology, methodologies, services, and social enterprises, all geared towards enhancing the well-being of individuals and the planet. Our strategy entails the careful selection of pioneering solutions, primarily channelled through the Palladium Challenge Fund. Throughout this process, we prioritize the incorporation of local community perspectives and the adoption of innovative technologies with a strong emphasis on gender, disability, and social inclusivity. The fund plays a crucial role in supporting our partners as they embark on piloting novel technologies and inventive models and methodologies, thereby reducing the risks associated with launching innovative ventures.

In 2022, the Challenge Fund doubled its impact by calling for proposals across two different themes.

## Measuring the Value of Nature:

Under this theme, we are currently partnering on three projects that aim to develop tools and programs for measuring and managing nature-based solution initiatives.

FarmTree is actively piloting and testing their FarmTree Tool within the Ethiopian coffee system. This tool integrates functionality for tracking carbon and biodiversity credits and certification, which will substantially enhance agroforestry planning and management for up to 12,000 coffee farming households.



Space4Good is developing the 'Carbometrica' Measurement, Reporting & Verification (MRV) tool for remote-sensing biomass and carbon assessment of agroforestry and afforestation projects. The funding will facilitate the creation of a new AI and machine learning algorithm for the Southeast Asia ecoregion.

Treeconomy is focused on creating an AI machine-learning tool for tree detection and measurement in mixed UK woodlands. This initiative will yield cost savings, increase the speed and accuracy of forest surveys and carbon calculations, enhance the rigor and trustworthiness of reforestation projects' impact assessment, lower entry barriers for rural landowners and farmers, and offer broad applicability on a global scale.



## Jobs for Refugees:

Under this theme, three projects have been selected with the goal of creating more inclusive solutions for refugees and internally displaced people to secure sustainable employment.

Incluyeme.com is partnered with Kyeema and collaborating with the National Technological University of Argentina, Amazon Web Services (AWS), and 600 employers to provide training and job placement opportunities for Latin American refugees in well-paying positions. This project is designed to build local capacity and foster relationships among the university, AWS, the private sector, and refugee-serving groups. It aims to equip marginalized populations with the skills needed for careers in the rapidly growing digital fields.



CONCAT Tech is dedicated to training and placing female Palestinian refugees in the tech industry. This project seeks to enhance the digital and soft skills of female Palestinian refugees, promote their proficiency in digital technologies, and raise awareness of CONCAT digital services for companies looking to support marginalized populations through web development expenditures.



LiMA Farm, a social enterprise of Lira-Magoya Investments in Uganda, is empowering refugees from South Sudan by providing training, employment through cassava farming opportunities. This initiative includes funding for training, seed distribution, and expanding cassava processing. It demonstrates the impact of a processing facility, adapts to climate change with resilient cassava varieties, and develops markets for tractor services and seed sales. Local community mobilization is central, establishing ten farmer groups—80% refugees, 20% host community members. These groups receive comprehensive support, including land access negotiations, tractor services, quality cassava seeds, and expert agronomist guidance, promoting sustainable agriculture practices.

*Inception meeting with refugees and host community group leaders at the Palabek Refugee Settlement. Photo credit: LiMA Farm.*







# Sustainable and Equitable Development

---



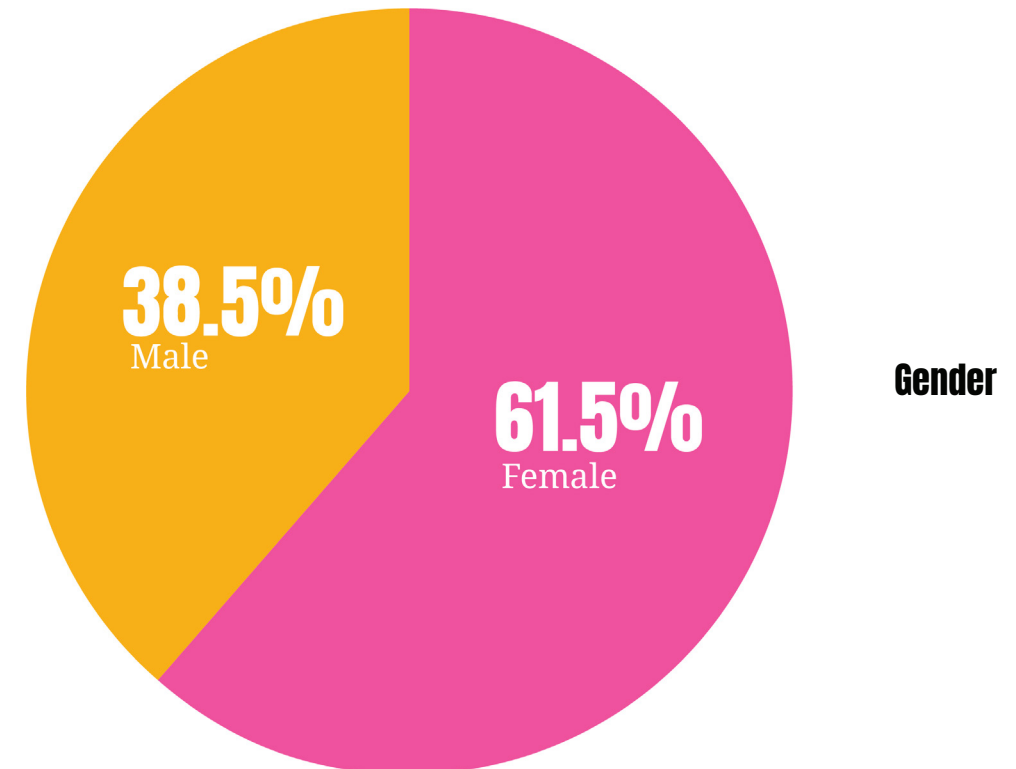
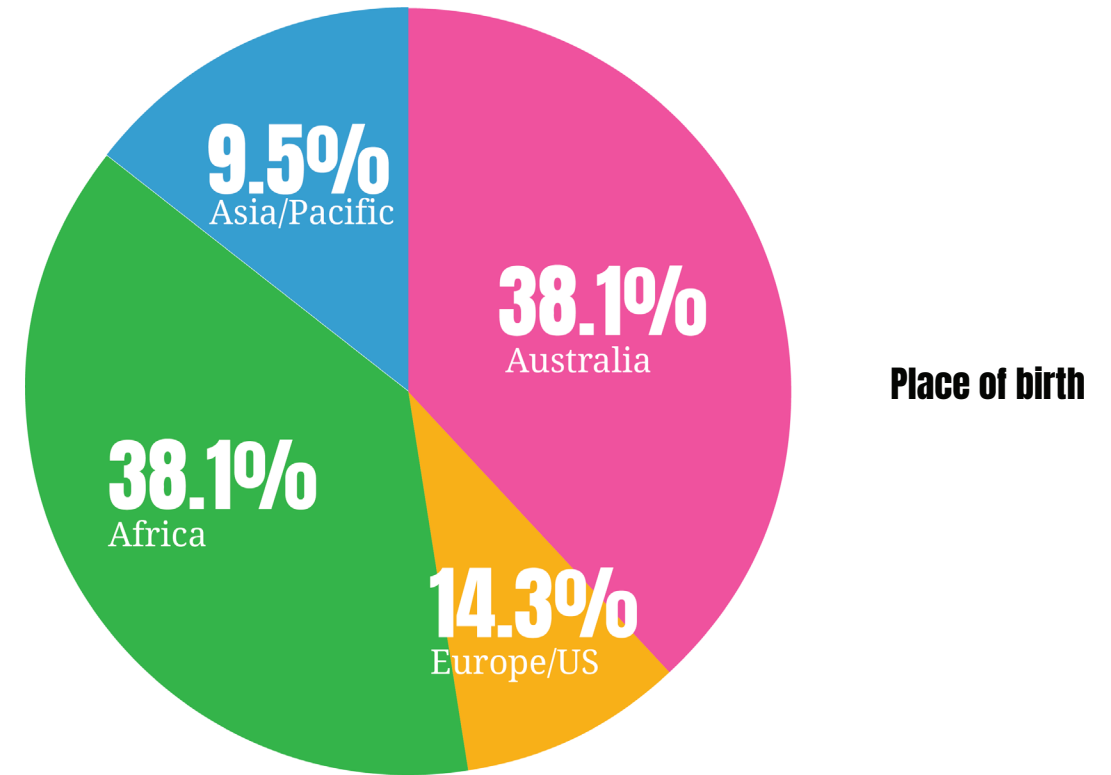
# Equity, Diversity, Inclusion & Safeguarding

Kyeema continues to build a culture of inclusion and equity at all levels of our organization. Our commitment involves fortifying our programs to tackle the unique barriers and challenges faced by marginalized groups within the diverse cultural contexts in which we operate.

Our new ANCP initiative in Mozambique focuses on empowering marginalized women by enhancing their poultry production capabilities, and fostering increased sales and consumption of village chicken meat and eggs. To evaluate the impact of our livestock-related efforts on women's empowerment in this sector, we've initiated a trial using the Women's Empowerment in Livestock Index (WELI) tool. By gaining a more precise understanding of the most effective interventions for creating empowering opportunities, the WELI tool holds the promise of more informed decision-making, ultimately enhancing our program.

Throughout this year, Kyeema's various programs have had a direct impact on the lives of 8,332 women and girls, and 280 of them have taken on leadership roles. Additionally, thanks to activities funded through the Humanitarian Relief fund, aimed at aiding communities affected by the Ukrainian conflict, we have extended our reach to 40,035 individuals. These outreach efforts encompassed sessions dedicated to the prevention, reduction, and response to violence, abuse, and the exploitation of children. Furthermore, we provided essential support and services to 192 female survivors of violence, addressing their unique needs and challenges, and empowering opportunities for women involved in livestock activities.

## Organisational Diversity and Inclusion



**1,209** women and girls with increased participation in education, community initiatives, leadership



**280** women supported to assume leadership roles



**8,332** women and girls directly supported through our programs



**7** women's groups engaged



**732** girls are supported to attend school and get an education



**116** people who received disability support services specific to their needs



**1,556** people trained in disability awareness and inclusion



**40,035** people who participated in sessions on prevention, reduction and response to violence, abuse and exploitation of children



# Environmental Sustainability

This year marks a significant milestone in our coral and mangrove restoration efforts in PNG. In Ala Ala, Central Province, PNG we trained 5 community conservation leaders and 20 young community members, equipping them with the necessary skills to set up and maintain a coral nursery. We are very grateful for the generous support of the US State Department under the Regional Environment, Science, Technology, and Health (ESTH) Grants for Pacific Island States which made this activity possible. Kyeema will continue to support and consult with the community to manage the nursery and subsequent outplanting activities.

World Environment Day in Papua New Guinea provided us with a remarkable opportunity to showcase the outstanding efforts of our local community-led team this year. Collaborating with 40 enthusiastic school students, we successfully planted 100 mangrove seedlings cultivated in our own nursery. The inclusion of Susan, an exceptional female coral gardener from Yule Island, who joined forces with our Hanuabada Village team and students from two nearby schools, allowed us to establish five A-frame nurseries at Ela Beach. This collective effort not only exemplified our commitment to environmental conservation but also served as an inspiring platform to nurture and empower the next generation of environmental champions.

We have also been actively collaborating with our Master Farmers in Papua New Guinea and engaging female participants in the Marracuene project in Mozambique to advance sustainable feed development, ensuring the responsible cultivation and utilization of locally sourced feed for their expanding flocks.

## One Health and Welfare Education

This year we have expanded our portfolio in the One Health and Welfare Education in East and West Africa, the Pacific and Australia. The activities targeted a range of learning audiences, who learned real world examples of the critical interdependence of humans, animals, and their environments and the global problem of emerging zoonotic diseases driven by land use and climate change and antimicrobial resistance. These included primary school students in Brisbane, being the first in Australia to pilot One Health Lessons on COVID-19, university students in Ethiopia consulted on supporting activities through One Health poultry clubs and veterinary paraprofessionals in Nigeria, Uganda and Samoa trained to 'Improve Farm Biosecurity for Health and Wealth' as a specific service offering to farmers, including reducing the need for use of antimicrobials on farms.



## Carbon Offset Scheme

The offset funds for the 22-23 financial year will be spent on community-led coastal ecosystem rehabilitation as part of our Nature-based solution portfolio in the Pacific.

**2,287.71 AUD**

## Supporting sustainable growth and resilience through regenerative agriculture

As a normal part of our reflection and planning cycle this year, we sat down with key partners and tried to articulate how we can better support regenerative agriculture. Beyond education, inclusive community capacity building and investments in individual livelihood options, we want to support sustainable market linkages. This includes assisting farmers in forming producer cooperatives, connecting them with fair trade organizations, local markets, or even export markets. Strengthening value chains can enable farmers to access better prices for their produce and increase their income, thus enhancing resilience. In addition, we are also teaming up to help communities prepare for funds from carbon projects.

## Nature-based solutions to climate change.

We were grateful to receive a two-year costed extension from DFAT and WWF Australia to further our Nature-based solution initiatives in the Pacific. With the successful completion of our Marine Science and community workshops, we are now gearing up for the next phase of our project.

In this upcoming phase, our primary focus will be to sustain our commitment to the marine science test sites and community coral nurseries, ensuring their ongoing maintenance and continuous monitoring. This extended period will afford us the necessary time to gather essential data from these sites, which will be invaluable for evaluating the effectiveness of propagating heat-resistant corals. Our ultimate goal is to establish new reefs that exhibit higher thermotolerance, crucial for combatting the challenges posed by increasing ocean temperatures. The extension will also see activities expand into Kiribati. In Papua New Guinea and Fiji, there will be renewed focus on supporting community leaders who are highly motivated to see ecological and social change in their communities. They will motivate community members through training (including use of a new video-based training package) on coral reef restoration for climate change and improved village poultry keeping.

This extension is a fantastic opportunity for us to further our research and make a positive impact on the Pacific ecosystem. We are grateful for the support from DFAT and WWF and look forward to the continued success of our nature-based solutions project.



# Global Goals

One of our primary organizational objectives is to bring about substantial and lasting impacts on health and prosperity. To track our progress towards this goal, we use the United Nations Sustainable Development Goals (SDGs) and relevant indicators to measure our impact annually across all of our projects. This year, we have measured against 43 of our organisational indicators, which aligns with 15 out of the 17 Sustainable Development Goals (SDGs) across 29 diverse projects spanning 21 countries in Africa, Asia-Pacific, Europe, the Middle East, and South America.

A key focus for the organisation revolves around Nutrition, Health, and Livelihoods, and this year we have seen a notable increase in our impact towards Zero Hunger (SDG 2). Additionally, we have been consistently contributing to the promotion of Good Health and Wellbeing, making it a significant impact area across our projects.

Within our Resilient Communities portfolio, this year has witnessed a surge in projects centred on female empowerment and inclusion, resulting in an uptick in projects reporting positive impacts on Gender Equality (SDG 5).

Our innovation portfolio, encompassing innovative projects implemented under the Challenge Fund in addition to our focus on supporting small businesses and creating income-generating opportunities for marginalized communities often through vaccination campaigns, have led to an increased impact on Decent Work and Economic Growth (SDG 8) and a substantial percentage of contributions to Industry, Innovation, and Infrastructure (SDG 9).

Through numerous partnerships, especially those involving the Palladium funds for impact activities, through the Our Communities Fund, Humanitarian Relief Fund, and Challenge Fund, we actively support Partnerships for the Goals (SDG 17), reinforcing our commitment to collaborative efforts for sustainable development.



## Percentage of Kyeema projects contributing to each SDG



1. No poverty - 14%
2. Zero hunger - 40%
3. Good health and well being - 28%
5. Gender equality- 52%
6. Clean water and sanitation - 3%
7. Affordable and clean energy - 3%
8. Decent work and economic growth - 66%
9. Industry, innovation and infrastructure - 28%
10. Reduced inequalities - 14%
12. Responsible consumption and production - 10%
13. Climate action - 17%
14. Life under water - 10%
15. Life on land - 7%
16. Peace, justice and strong institutions - 24%
17. Partnerships for the goals - 79%

## Nutrition, Health, and Livelihoods



## Resilient Communities



## Innovation

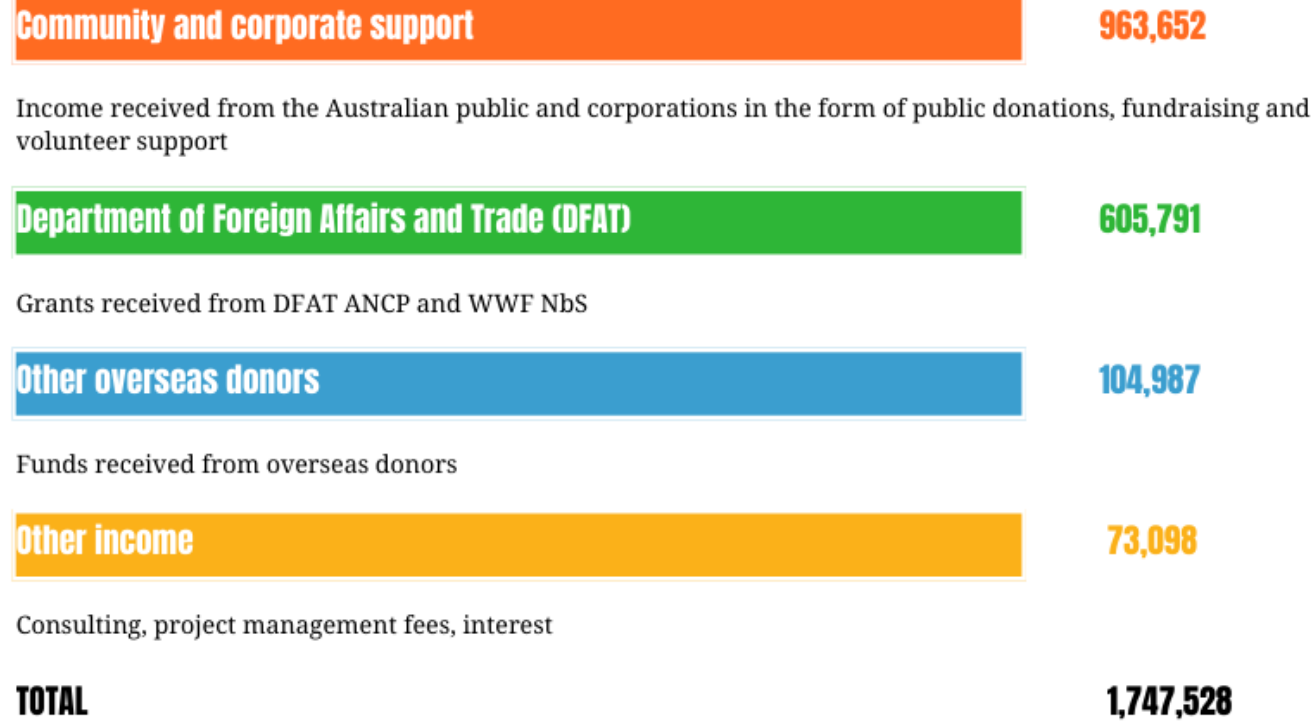




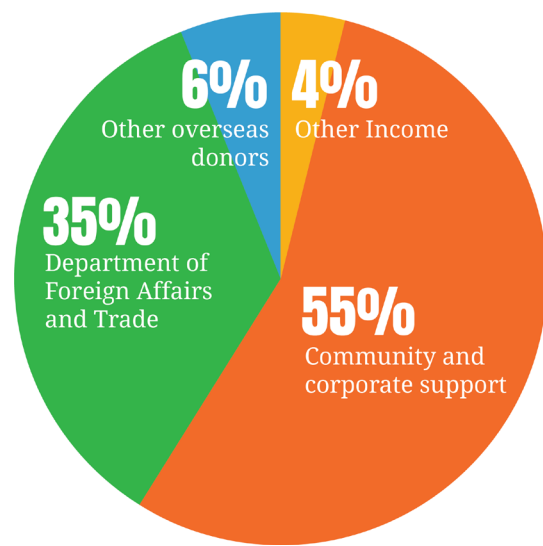
# Financial Statements

## Financial overview for the year ending 30 June 2023

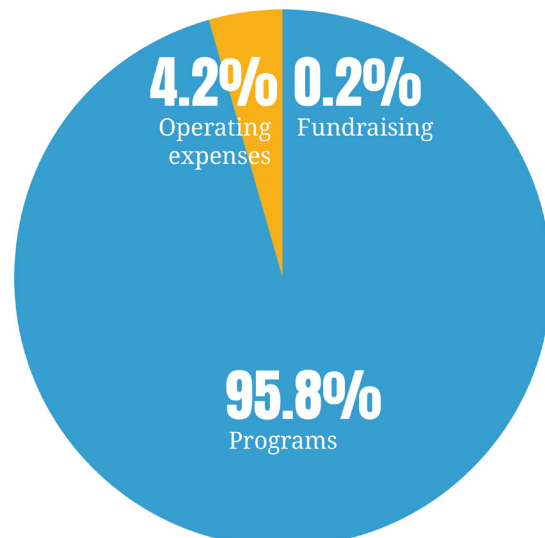
### Where the money came from



### Sources of Income



### Ratio of expenditure



## How the money is spent

How the money is spent	
Programs	1,403,132
Expenditure on programs, including non-monetary expenditure	
Papua New Guinea	132,943
Pacific	334,704
Mozambique	166,232
Ethiopia	207,617
Malawi	140,842
Vanuatu	30,815
Uganda	46,000
Ghana	25,856
Kenya	27,000
Tanzania	1,990
Ukraine	34,521
Bangladesh	15,000
India	2,737
Mongolia	15,000
Colombia	27,000
Latin America	13,530
United Kingdom	26,089
United States	28,800
<b>Program support costs</b>	<b>292,408</b>
<b>Fundraising expenses</b>	<b>222</b>
<b>Operating expenses</b>	<b>61,632</b>
Accountability and administration	
<b>TOTAL</b>	<b>1,757,394</b>

Kyeema Foundation's income consists of grants from institutional donors, donations from corporates and individuals, and revenue generated from fundraising activities. Revenue was recorded at \$1,747,528 for the year, representing an increase of 24% on 2021-22, predominantly driven by the Corporate partnership and the WWF NbS program in the Pacific.

In 2022-23, Kyeema had a total expenditure of \$1,757,394 up 23% compared to 2021-22. This was primarily due to Corporate partnership activity that commenced in 2019-20 and the WWF NbS program in the Pacific commenced in 2021. We continue to run a lean operation, with a low proportion of expenditure directly relating to administration costs at 3.5% and program support costs at 16.6%. We keep our fundraising costs low at 0.01% of overall expenditure.

We will continue to pursue an income diversification strategy moving into 2023-24 with the goal of long term sustainability. This will be driven by a focus on new partnerships, activities, and public fundraising. The Board and management at Kyeema continue to closely monitor the organisation's financial situation to maximise our contribution to achieve our mission. The above revenue and expenditure graphs represent our various components of income and expenditure as a proportion of the totals. Each category is adapted from the summary financial statements on the following pages and is based on the definitions described in the ACFID Code of Conduct.



## Statement of comprehensive income for the year ended 30 June 2023

	2023	2022
		(\$)
<b>REVENUE</b>		
Donations and gifts	963,652	605,881
Monetary	845,753	462,015
Non-monetary	117,899	143,866
Bequests and Legacies		
Grants	710,778	671,518
Australian Aid	605,791	200,202
Other Australian donors	-	162,000
Other overseas donors	104,987	309,316
Investment income		
Other income	73,098	57,312
(consulting, project management fees, interest)		
<b>TOTAL REVENUE</b>	<b>1,747,528</b>	<b>1,334,711</b>
<b>EXPENDITURE</b>		
International Aid and Development Programs Expenditure	1,577,641	1,167,580
International programs	1,285,233	1,009,924
Funds to international programs		
Program support costs	292,408	157,656
Community education		
Fundraising costs	222	1,012
Public	222	1,012
Government, multilateral and private		
Accountability and Administration	61,632	48,353
Non-Monetary Expenditure	117,899	143,866
Total International Aid and Development Programs Expenditure	1,757,394	1,360,811
Domestic Programs Expenditure		-
<b>TOTAL EXPENDITURE</b>	<b>1,757,394</b>	<b>1,360,811</b>
<b>EXCESS / (SHORTFALL) OF REVENUE OVER EXPENDITURE</b>	<b>- 9,866</b>	<b>- 26,100</b>

During the financial year, the agency had no Income or Expenditure for Political or Religious Adherence Promotion activities. The above figures have been extracted from the Audited Financial Statements for the year ended 30 June 2023. For a copy of this full financial report, please email us at kyeema@kyeemafoundation.org.

## Statement of financial position as at 30 June 2023

	2023	2022
<b>ASSETS</b>		
Current Assets		
Cash and cash equivalents	430,900	657,724
Trade and other receivables	80,527	44,739
Inventories		
Assets held for sale		
Other financial assets		
Total Current Assets	511,427	702,463
Non Current Assets		
Trade and other receivables		
Other financial assets	-	-
Property, plant and equipment	37,215	-
Investment property		
Intangibles		
Other non-current assets		
Total Non Current Assets	37,215	-
<b>TOTAL ASSETS</b>	<b>548,642</b>	<b>702,463</b>
<b>LIABILITIES</b>		
Current Liabilities		
Trade and other payables	48,875	26,256
Borrowings		
Current tax liabilities		
Other financial liabilities		
Provisions		
Other (unspent funding)	273,065	456,587
Total Current Liabilities	321,940	482,843
Non Current Liabilities		
Borrowings		
Other financial liabilities		
Provisions	25,409	8,461
Other		
Total Non Current Liabilities	25,409	8,461
<b>TOTAL LIABILITIES</b>	<b>347,349</b>	<b>491,304</b>
<b>NET ASSETS</b>	<b>201,293</b>	<b>211,159</b>
<b>EQUITY</b>	<b>201,293</b>	<b>211,159</b>
Reserves		
Retained Earnings	201,293	211,159
<b>TOTAL EQUITY</b>	<b>201,293</b>	<b>211,159</b>

At the end of the financial year, Kyeema had zero balances in Current or Non Current Other Financial Assets, Non Current Trade and Other Receivables, Non current Investment Property, other Non current Assets, Current and Non current Interest Bearing Borrowings, Current and Non Current Other Liabilities.



## Statement of changes in equity for the year ended 30 June 2023

	Retained Earnings	Reserves	Other	Total
Balance at 1 July 2022	211,159			211,159
Adjustments or changes in equity due to, for example, adoptions of new accounting standards				
Items of other comprehensive income				
Excess of revenue over expenses	- 9,866			- 9,866
Other amounts transferred (to) or from reserves				
<b>Balance at 30 June 2023</b>	<b>201,293</b>			<b>201,293</b>

## Table of cash movements for designated purposes for the year ended 30 June 2023

	Cash available at beginning of financial year	Cash raised during financial year	Cash disbursed during financial year	Cash available at end of financial year
1. Designated purpose (Rural Poultry Centre, Malawi)	17,152	25,582	16,872	25,862
Total for other non-designated purpose	639,567	1,533,108	1,767,637	405,038
<b>TOTAL</b>	<b>656,719</b>	<b>1,558,690</b>	<b>1,784,509</b>	<b>430,900</b>

### Note on 2022-23 Cash Movements

Designated purpose funds were raised for:

1) The Rural Poultry Centre (RPC) in Malawi, which was established in early 2013 as an affiliate of the International Rural Poultry Centre, a subsidiary of the Kyeema Foundation (<http://www.ruralpoultrymalawi.org/>). The RPC exists to promote the needs of smallholder poultry farmers throughout Malawi and to raise livelihoods and contribute to improved nutrition in rural areas of Malawi. RPC adopts a keep-it-simple philosophy with an emphasis on effective support at the grass roots level. Presently, there is no other local organisation dedicated to village poultry. RPC has a Board of Trustees to oversee the overall governance and policies of the organisation.

## Statement of cash flows for the year ended 30 June 2023

	2023	2022
<b>Cash from operating activities:</b>		
Receipts from customers	1,545,771	1,386,961
Payments to suppliers and employees	- 1,784,509	- 1,241,041
Interest received	3,519	302
Net Cash provided by (used in) operating activities	- 235,219	146,222
<b>Cash flows from investing activities:</b>		
Purchase of property, plant and equipment	9,400	-
Net Cash provided by (used in) investing activities	9,400	-
<b>Cash flows from financing activities:</b>		
Proceeds from borrowing	-	-
Net Cash provided by (used in) financing activities	-	-
Net increases (decreases) in cash held	- 225,819	146,222
Cash at beginning of financial year	656,719	511,502
<b>Cash at end of financial year</b>	<b>430,900</b>	<b>657,724</b>



**INDEPENDENT AUDITOR'S REPORT  
TO THE MEMBERS OF  
KYEEMA FOUNDATION LIMITED**

**AUDITOR'S INDEPENDENCE DECLARATION TO THE BOARD OF  
KYEEMA FOUNDATION LIMITED**

*Opinion*

We have audited the accompanying financial report of Kyeema Foundation Limited which comprises the statement of financial position as at 30 June 2023, the statement of profit or loss and other comprehensive income, statement of changes in equity and statement of cash flows for the year ended on that date, notes comprising a summary of significant accounting policies and other explanatory information, and the Directors' declaration.

In our opinion, the financial report of Kyeema Foundation Limited ("the company") is in accordance with the *Corporations Act 2001* and with *Division 60 of the Australian Charities and Not-for-Profits Commission Act 2012 (ACNC Act)* including:

- i. giving a true and fair view of the company's financial position as at 30 June 2023 and of its financial performance for the year ended on that date; and
- ii. complying with Australian Accounting Standards - Simplified Disclosures and the *Corporations Regulations 2001* and *Division 60 of the Australian Charities and Not-for-Profits Commission Regulation 2022*.

*Basis of Opinion*

We conducted our audit in accordance with Australian Auditing Standards. Our responsibilities under those standards are further described in the *Auditor's Responsibilities for the Audit of the Financial Report* section of our report. We are independent of the company in accordance with the auditor independence requirements of the *Corporations Act 2001* and the ethical requirements of the Accounting Professional and Ethical Standards Board's APES 110 *Code of Ethics for Professional Accountants* (the Code) that are relevant to our audit of the financial report in Australia. We have also fulfilled our other ethical responsibilities in accordance with the Code.

We confirm that the independence declaration required by the *Corporations Act 2001*, which has been given to the Directors of the company, would be in the same terms if given to the Directors as at the time of this auditor's report.

We believe that the audit evidence we have obtained is sufficient and appropriate to provide a basis for our opinion

*Other Information*

The Directors are responsible for the other information. The other information comprises the information included in the company's annual report for the year ended 30 June 2023, but does not include the financial report and our auditor's report thereon.

Our opinion on the financial report does not cover the other information and accordingly we do not express any form of assurance conclusion thereon.

In accordance with the requirements of the *Corporations Act 2001* & section 60-40 of the *Australian Charities and Not-for-profits Commission Act 2012*, as auditor for the audit of Kyeema Foundation Limited for the year ended 30 June 2023, I declare that, to the best of my knowledge and belief, there have been:

- (i) No contravention of the auditor independence requirements of the *Corporations Act 2001* & section 60-40 of the *Australian Charities and Not-for-profits Commission Act 2012* in relation to the audit; and
- (ii) No contravention of any applicable code of professional conduct in relation to the audit.



Johann Swanepoel CA  
Director  
Registered Audit Company (No. 342 577)  
Registered Auditor (No. 549613)

Fortitude Valley, 30 October 2023



## Governing Body Declaration

---

The Board of Directors of Kyeema Foundation declare that:

- i) The financial statements and notes as set out on pages 29 to 37, have been prepared in accordance with the Corporations Act 2001, the requirements set out and the Australian Charities and Not-for Profits Commission Act 2012, and the Australian Charities and Not-for Profits Commission Act 2012, and:
  - comply with relevant Australian Accounting Standards as applicable; and
  - give a true and fair view of the financial position as at 30 June 2023 and of its performance for the year ended on that date.
- ii) In the Directors' opinion there are reasonable grounds to believe that the association will be able to pay its debts as and when they become due and payable.

This declaration is made in accordance with a resolution of the Board of Directors.



Dr Stewart Routledge, AO

Director

Brisbane



Celia Grenning

Director

Gold Coast

## Acknowledgements

---

We would like to acknowledge the expertise, support, and assistance of the following hard-working volunteers who have been vital to keeping Kyeema and its projects operating.

### Interns

Jessica McIntosh, Fardowsa Yussuf, James Lwin, Eunseo Oh, Althea Wang.

### Technical support

Dr Mary Young, Dr Pat Boland, Dr Austin Bowden-Kerby, Dr John Copland, Laurence Romeo, Kirsty Frith, Dr Simon Costanzo.

### Fund selection committees

Tara Nutley, Usman Gwarzo, Nasir Ahmed, Farheen Khurram, Nour Serry, Katy Vickland, David Wallis, Laura Grubb, Shaalini Ganesalingam, Tom Bayer, Abdelrahman Arqawi, Laura Highton, Lauren Watson, Teresa Putri Dwi Prabono, Ben Campbell.

### Administrative support

Nhi Pham, Sri Thillailingam, Fardowsa Yussuf, Shirley Buckingham.

### Website and IT support

Paolo Curray, Taro Dodd, Tony Hunt, Simon Probert.

### Legal support

White and Case LLP International Law Firm.

### Communications support

Mike Worsman (Give Media), Gina Muller (Collective Views).



# Partners and Sponsors

We would like to say a huge thank you to our partners and supporters.

The **Australian Government Department of Foreign Affairs and Trade (DFAT)** provides support for sustainable Newcastle disease control activities in Ethiopia, Malawi and Mozambique and village chicken and coral gardening activities in PNG through the Australian NGO Cooperation Program (ANCP).

**Palladium** has supported Kyeema since its inception in 2003 through the provision of office space and administrative and financial support. This valuable support has allowed Kyeema to establish and expand its work around the world. Palladium has also made important financial contributions to Kyeema activities since its inception. Kyeema works in partnership with Palladium to deliver the Challenge Fund, Our Communities, and Humanitarian support programs.

**Department of State, United States of America** for supporting projects in Papua New Guinea.

The **European Commission through the African Union** for supporting our contributions to the multi-partners 'Native Chicken' project in Mozambique and Uganda.

The **Austrian Development Agency** for supporting the delivery of training and service through the International Institute of Tropical Agriculture on the 'Sofala Province Water, Energy, and Food Security (SWEF)' project.

The **Rotary Club of Brisbane** has provided funding to support the PNG village chickens and coral gardening activities. They continue to raise funds for our activities in PNG.

The **African Union - Pan African Veterinary Vaccine Centre** has provided continued support for the development and review of Master trainer curricula for Newcastle disease control in Africa.

**WWF Australia** for supporting us through the Climate Resilient by Nature Program Challenge Fund implementation.

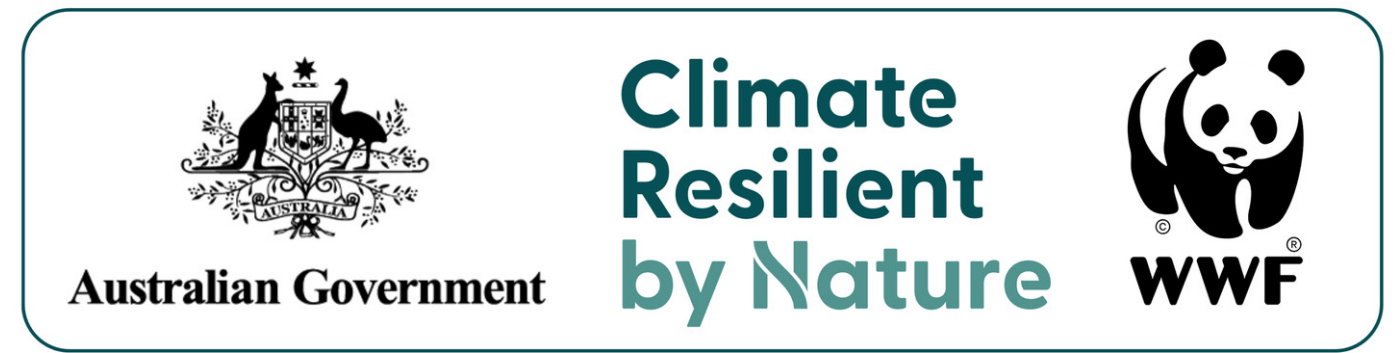
**Tropical Water Solutions Pty Ltd** have provided generous funds for our activities in Malawi and Papua New Guinea.

**The Heydon Family** have provided generous financial support for activities in PNG. Specifically, this year, their contributions helped to support our World Environment Day workshops in mangrove and coral restoration for school students.

We want to thank the Palladium staff that provide generous donations each month through our **Workplace Giving** program.

The **School of Veterinary Science at The University of Queensland** maintains and continues to provide the I-2 Newcastle disease master seed free of charge.

Kyeema receives private donations from the Australian public, which are most important for furthering our activities. We could not do what we do without the generous support of many loyal businesses and individuals, both in time and money. Kyeema thanks each one of you.





# Governance

## The Kyeema Foundation Board

Dr. Robyn Alders, AO  
Chair - retired in  
December 2022



Sinead Magill  
Chair - appointed in  
December 2022



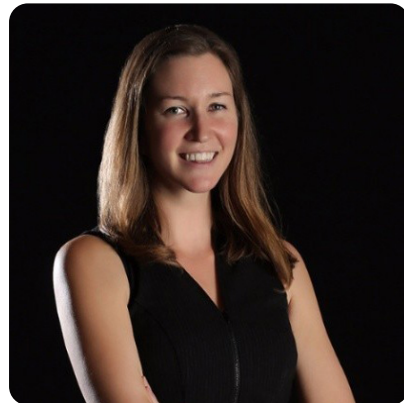
Kim Bredhauer  
Director



Dr. Rosa Costa  
Director



Elizabeth Godo  
Director



Dr. Stewart Routledge  
Director



Fergus Smith  
Director



Chris Lee  
Director - retired in  
January 2023



Celia Grenning  
Director - appointed  
in January 2023



## Kyeema Foundation Members

The following new Members are supporting Kyeema in our Mission through their time, connections, and in some cases financial contribution. Jabulani Nyenwa, Janine Griffiths, Joost Verwilghen, Joyce Onguglo, Mary Young, Nick Clinch, Pat Boland, Joe Ichter, Rachel White, Ricardo Michel, Robert Le Busque, John Copland, Robyn Alders, Chris Lee.

## Sub-committees of the Board

The three Board Sub-committees meet three times a year prior to each Board meeting in order to improve organisational governance structure and outcomes.

The **Strategic Planning (SP) Sub-committee** comprised Elizabeth Godo (Chair), Aysegul Kayahan, Kim Bredhauer and Eliza Smith, leads the implementation of our 2021–2026 Strategic Plan and makes recommendations for areas in which we need to focus as an organisation in order to achieve our goals and create an environment that is reflective of our organisational values.

The **Finance, Audit and Risk Management (FARM) Sub-committee** comprised Fergus Smith (Chair), Kim Bredhauer, Celia Grenning and Stewart Routledge, oversees the checks and balances we have in place for managing our fundraising and expenditure, monitors organisation risk and acts to ensure that our organisation continues to be sustainable.

The **Project Monitoring and Evaluation (PME) Sub-committee** comprising Pat Boland (interim Chair), Sinéad Magill, Rosa Costa, Joyce Onguglo and Stewart Routledge oversees the selection of all new Kyeema projects and reviews our monitoring, evaluation and learning activities across our projects.

We sincerely thank our Board and Sub-committees, who are all volunteers, for their guidance and direction over the past year.

We are a registered charity with the Australian Charities and Not-For-Profit Commission (ACNC).

We are also a member of the Australian Council for International Development (ACFID).

We are an Australian accredited NGO to the Department of Foreign Affairs and Trade Australian NGO Cooperation Program (ANCP).



ACFID  
MEMBER





**KYEEMA FOUNDATION**

## **Supporting local innovation. Enriching lives.**

We believe in a world where partnerships catalyse innovation to improve the health and prosperity of marginalised communities and their environments.

**Donate at [www.kyeemafoundation.org/donate](http://www.kyeemafoundation.org/donate)**

GPO Box 3023, Brisbane QLD 4001 Australia

T: +61 7 3025 8566

E: [kyeema@kyeemafoundation.org](mailto:kyeema@kyeemafoundation.org)

W: [www.kyeemafoundation.org](http://www.kyeemafoundation.org)